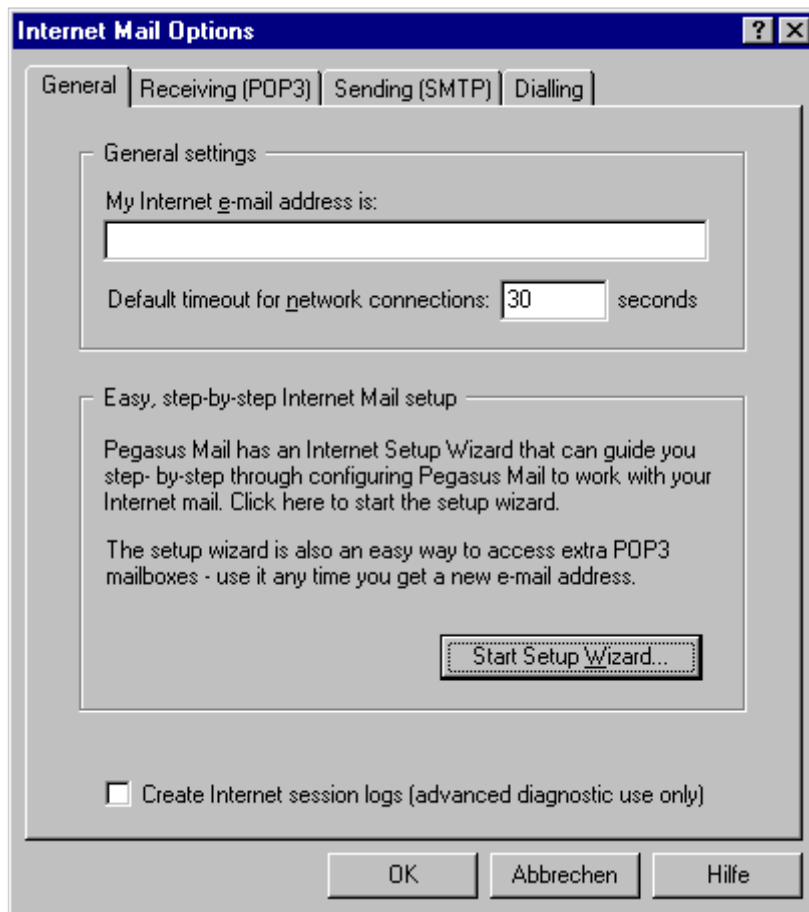
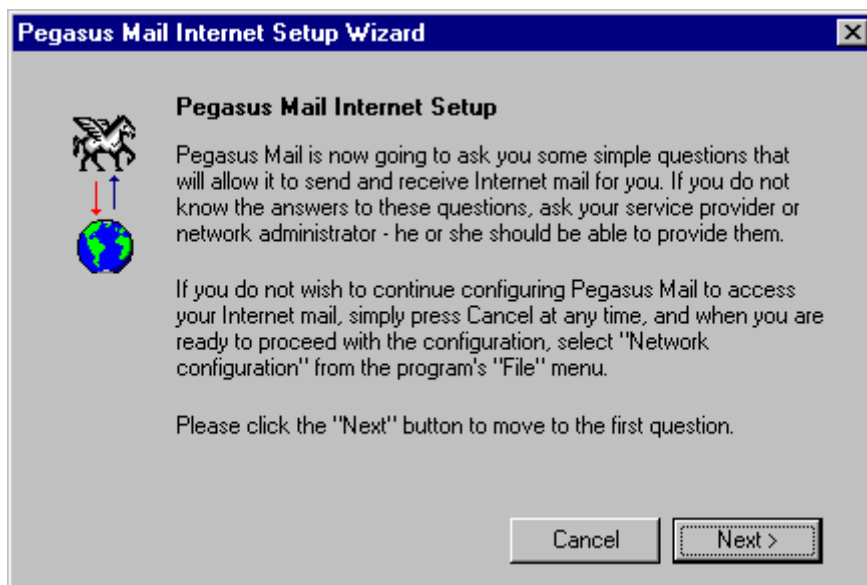


## Pegasus Mail 4.1



Um mit dem Einrichten Ihres E-Mail Kontos zu starten, klicken Sie bitte auf den Button „**Start Setup Wizard**“



Der Startassistent wird nun gestartet. Klicken Sie auf „**NEXT**“

**Pegasus Mail Internet Setup Wizard**



**Your electronic mail address**


Please type in your electronic mail address below. Your electronic mail address should look something like "sally@riverboat.org" - namely, a username followed by an '@' symbol and an Internet domain name.

- \* Click "Next" when you have entered your address
- \* Click "Back" to return to the last screen
- \* Click "Cancel" to stop the configuration process for now.

Cancel < Back Next >

Tragen Sie Ihre E-Mail Adresse in das freie Feld ein.  
Klicken Sie auf „**NEXT**“

**Pegasus Mail Internet Setup Wizard**



**The address of your POP3 server**



Please type in the name of the machine that acts as your POP3 server below. This address usually will not contain an '@' symbol. A "POP3 server" is Internet jargon for a machine where your incoming mail is stored until you ask for it.

- \* Click "Next" when you have entered your POP3 server address
- \* Click "Skip" if you don't want to create a POP3 definition at this time
- \* Click "Back" to return to the last screen
- \* Click "Cancel" to stop the configuration process for now.

Cancel < Back Skip > Next >

Tragen Sie anschliessend den POP3-Server ein  
Klicken Sie auf „**NEXT**“

**Pegasus Mail Internet Setup Wizard**

**Your username and password**

Your "username" identifies whose mail you want to get from the POP3 server, and your "password" proves that you really are who you say you are. Either may be case-sensitive, so "bob" and "BOB" may be regarded as different - be careful to type them in accurately.

User name:

Password:

\* Click "Next" when you have entered your username and password  
\* Click "Back" to return to the last screen  
\* Click "Cancel" to stop the configuration process for now.

Tragen Sie Ihre persönlichen Zugangsdaten ein  
Klicken Sie auf „**NEXT**“

**Pegasus Mail Internet Setup Wizard**


**The address of your SMTP server**

Please type in the name of the machine that acts as your SMTP server below. This address usually will not contain an '@' symbol. An "SMTP server" is Internet jargon for a machine that can send your messages to their final Internet destinations for you. You can often enter your POP3 server here, but ask your network manager or ISP if you are unsure.

\* Click "Next" when you have entered your SMTP server address  
\* Click "Skip" if you don't want to create an SMTP definition at this time  
\* Click "Back" to return to the last screen  
\* Click "Cancel" to stop the configuration process for now.

Hier werden Sie nach Ihrem SMTP bzw. Postausgangsserver gefragt  
Klicken Sie auf „**NEXT**“



Zum Schluss bestimmen Sie noch die Art Ihrer Internetverbindung  
Klicken Sie „**NEXT**“ um den Wizard abzuschliessen